



SEMSA Calendar 2004-2005

SEMSA Group Lessons – Pax Christi Catholic Church

4134 18th Avenue NW, Rochester, MN

Fridays, 4:00PM - 6:00PM

March 11

April 15

SEMSA Concert and Pizza Party – 1st Presbyterian Church

512 First Avenue SW, Rochester, MN

May 6, 2005

Rehearsals - 4:00PM to 4:45PM, Concert - 5:00PM to 6:00PM, and Pizza Party - After the Concert

Suzuki Association of Minnesota Graduation

Strings, Harps and Flutes - Orchestra Hall

1111 Nicollet Mall, Minneapolis, MN

March 12, 2005

Piano - College of St. Catherine, The O'Shaughnessy Auditorium

2004 Randolph Avenue, St. Paul, MN

March 19, 2005

SEMSA Ensemble Recital - Congregational Church

965 17th Avenue SW, Rochester, MN

April 30, 2005

Time to be Determined

Gasshuku at Eagle Bluff 2005 – Friday, October 14th to Saturday, October 15th, 2005

Eagle Bluff Environmental Learning Center, Lanesboro, MN

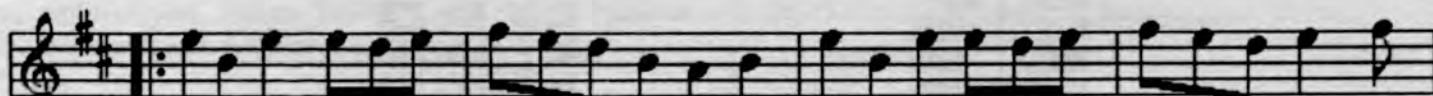
Mark your calendar with the dates for SEMSA's big bi-annual music workshop. Plans being developed, clinicians are being invited and grant writing is in progress, all in order to provide you with a memorable music education experience for each cello, flute, piano, viola, and violin student. Watch for details in the next newsletter!

Young Musicians of Southeastern Minnesota Recitals

The SEMSA Board has discussed the need for recitals exclusively for teenagers on several occasions. We wanted to include the whole community of young musicians, not just our own students. We therefore asked the Rochester Area Keyboard Club to partner with us and organize a recital series, splitting expenses along the way. The Keyboard Club agreed and the combined organizations have sponsored two recitals so far.

We contacted our own membership and other organizations to spread the word among area music teachers. Thirteen teachers have nominated students and twenty-one students have performed. About a third of the participants have been SEMSA students. A third of the participants have come from communities outside Rochester where performance opportunities are more limited. Students pay a \$5 performance fee to help offset expenses. Audience attendance is free and open to the public.

Our last recital for the 2004-2005 school year is scheduled for **April 10, 2005, at 3 pm, at the Congregational Church, 965 17th Avenue SW, Rochester, MN.** Please come and support the fine young musicians from the Rochester area.



Studio News

From the studio of Barbara Bartleson

We have had a busy winter, preparing for lots of performances.

Leandra Hubka played for a masterclass sponsored by the Rochester Area Keyboard Club. The critic was Dr. Nancy Paddleford. Melanie Vincent was accepted as a participant, but unfortunately she was ill the day of the program.

The following students prepared to play at the Apache Mall Piano-A-Thon set for January 22, 2005: Aaron Anderson, Katie Anderson, Jessie Aney, Caitlin Bell, Sophie Charlton, Madison Clarke, Caleb Davis, Dana Davis, Spencer Davis, Callum Hubka, Irisa Hubka, Leandra Hubka, Nolan Perry-Arnold, Ashley Vincent, Melanie Vincent, Christina Wentz, Michaela Wentz, and Ryan Witzig. You may remember there was a terrible snow storm that day and the eagerly awaited event was cancelled. All day Saturday and Sunday various piano studios were to present students playing a fine Kawai grand piano in the area by Herbergers. We were really disappointed!

All eight students entering the preliminary round of the Minnesota Music Teachers Association Piano Contest advanced to the next level in the Twin Cities. Preliminary winners were Caitlin Bell, Sophie Charlton, Jake Gabriel, Jeff Gabriel, Joe Marks, Melanie Vincent, Ashley Vincent and Michaela Wentz.

Joe Marks and Caitlin Bell both passed the Minnesota Music Teachers Association Theory Test Level One with Distinction.

Barbara Bartleson presented a discussion on how to incorporate the state theory curriculum, in general, and the Circle of 5ths, specifically, into a studio lesson format. She spoke at the Rochester Area Keyboard Club January meeting.

From the Studio of Mary Carlson

Mary Carlson's students will be having their Spring Studio Concert on March 19th, 2005. It is at 3:30PM at the First Presbyterian Church.

From the Studio of Linda Thompson

Hannah Meline won the Carter Douglas award in the Rochester Music Guild competition and will perform on the Guild winners recital, Sunday, May 13, at 2:00 PM, Universalist Unitarian Church. Annie Ryu received Honorable Mention in the SEMYO Concerto Competition.

Hannah Meline and Meghan Lemens will perform solos at the SAM graduation, March 12, 2005 at Orchestra Hall. Only graduates of Book 9 and 10 perform solos at this event.

The following students will be participating in the Suzuki Association of Minnesota state-wide violin graduation.

Aaron Anderson, 6
Kathryn Anderson, 3
David Beyer, 5
Sean Chartier, 4
Teresa Edwards, 5
Nathan Hickey, 6
Jennifer Kim, 3
Meghan Lemens, 9

Riley Macon, 2
Sara Manulik, 2
Christina Meline, 1
Hannah Meline, 9
Laura Meline, 4
Elizabeth Michelson, 5
Rudy Miksanek, 6
Nicholas Ouellette, 2

Simon Ouellette, Twinkle
Nicholas Rohde, 5
Annemarie Ryu, 7
Marianne Scheitel, 4
Theodore Scheitel, Twinkle
Caroline Stroetz, 7
Howard Yeh, Twinkle, 1



From the studio of Carolyn Mead

WELCOME NEW CELLO FAMILIES!

Sohpie Stans (parent - Lena)
Evan Maraganore (parent - Jill)

Michael Hickey (parent - Judy)
Sophie Goetz (parent Cynthia)

Carolyn Meads's cello students have been busy with a variety of cello related activities.

HOLIDAY MUSIC AROUND ROCHESTER - There were lots of cellists playing Christmas carols for family and friends all around Rochester in December...

Gina, Maria, and Lea Dacy - Pax Christi Christmas program

Theo Pranoto Thayib - Pax Christi Children's Christmas program

Emily Clark, Sam Hoppe, Jonathan Nyman, Sam Stanley, Victoria Shull, Benjamin Hickey -- LOTS OF CHRISTMAS CAROLS with friends. Cello Christmas Carol Party - Sue Michelson once again invited cellists, violinists, and other musical friends into her home for the 3rd annual Cello Christmas Carol Party. Theo Pranoto Thayib, Daniel and Jonathan Michelson, and Carolyn Mead represented the cello studio. A wonderful afternoon of singing, laughing and sharing music...and yummy Christmas cookies too. Thank you Sue Michelson!

SAM GRADUATION - We have been busy recording graduation pieces for the state graduation recital March 12, 2005 at Orchestra Hall. Twinkle - Jonathan Michelson, Jonathan Nyman, Theo Pranoto Thayib, Sam Stanley
Level 1 - Joe Manulik, Theo Pranoto Thayib Level 2 - Gina Dacy, Jason Kim Level 3 - Daniel Luetmer
Level 4, 5 - Faith Grunewald

YOUNG MUSCIANS of SOUTHEASTERN MINNESOTA RECITAL - January 22

Alex Bolton - Sonata in G Major - Sammartini

Diana Shull - Concerto No. 4 in G Major - Goltermann

ROCHESTER CHAMBER MUSIC SOCIETY - YOUNG ARTISTS RECITAL - January 22

Joshua Rohde was invited to perform with Rochester young musicians Nadia Malek (flute), Hanna Kuipers (harp), and a vocal octet on the Rochester Chamber Music Society's Young Artists Recital at the Unitarian Church. It was a wonderful evening of chamber music. Joshua played a cello piece with Horacio Nuguid on piano - Sonata in G Major - Sammartini

ROCHESTER MUSIC GUILD COMPETITION - February 5, 2005

2nd place, string division - Eugene Kim 3rd place, string division - Joshua Rohde

Eugene and Joshua will perform on the Rochester Music Guild Winner's Recital March 13, 2005.

Thank you to Jan Matson for all of your hours of rehearsal.

SEMYO CONCERTO COMPETITION - February 6, 2005

Eugen Kim placed first in the SEMYO Concerto Competition. He will perform Haydn's Concerto in C Major with the SEMYO Concert Orchestra at the spring concert on May 15, 2005. Diana Shull and Joshua Rohde performed on the SEMYO Concerto Competition recital Friday, February 11, at Charter House. Diana Shull played Goltermann's Concerto No. 4 in G Major and Joshua Rohde played Bruch's Kol Nidre.

MINNESOAT ALL STATE ORCHESTRA - For the second year, Alex Bolton auditioned and was selected to perform with the Minnesota All State Orchestra. He will attend a summer workshop, rehearse with the orchestra throughout the year and participate in the orchestras final performance at MMEA State Music Convention in Minneapolis.

KTTC CANCER TELETHON - Faith Grunewald, played cello with the Chrystal Strings Quartet.

CELLO RECITAL - On November 28, 2004 Joshua Rohde, Eugene Kim, and Alex Bolton presented a cello recital at Our Savior's Lutheran Church. Joshua performed Suite No. 1 in G Major for unaccompanied Cell - J.S. Bach, Sonata in G Major - Sammartini, and Elegy - Faure. Eugene performed the first movement of Concerto in C Major - Haydn. Alex, Joshua and Eugene combined forces to play Chang and Fugue - Kibbe for cello choir.

CENTURY HIGH SCHOOL MUSICAL - Diana Shull played lots of lovely Bernstein melodies in the pit orchestra for the production of West Side Story.

From the Studio of DeAnn Spencer

DeAnn Spencer leads two groups of fiddling students; the older students are called *Fiddlers & Company* and the younger students are called *Fiddle Stix*.

Fiddlers & Company

Fiddlers and Company was invited for the second consecutive year to play on Rochester Day at the State Capitol. We performed for an hour each at the Rotunda and the Armory for two receptive audiences. Our repertoire includes solo, duet, and ensemble pieces for violins, tin whistle, bass, guitar and mandolin. Representative Fran Bradley honored us by introducing himself to us. We were happy to represent the young people of Rochester!
Submitted by Caitlin Johnson



Fiddle Stix

I was very excited when I found out that the Fiddle Stix were going to perform on live TV for the Eagles Cancer Telethon. But fame has its requirements. We were going to need practice - lots of practice. For almost five weeks, we plucked and played until our fingers hurt. The night of the Telethon, I called two of my school friends and both were thrilled and said they would watch. As we went on stage, I thought to myself, "Okay, this is it. You have to do this!" By the beginning of the second song, we were having fun, and I knew that even if I did mess up, everyone would still love me and I would still enjoy the violin.

The next day, I was awarded with hugs and high-fives from my two friends. If I could do it all over again, I would!
Submitted by Catherine Karsell

Instruments for Sale

1/32 size violin- brand new bow, perfect for beginners! \$150. 1/16 size violin- beautiful mature sound, like new condition. \$250. Contact: Adriana Lee at 529-5687 or email lee.adriana@mayo.edu

3/4 size Roth violin \$750 with case and bow. Has an old repaired crack and we have a statement from David Folland that it is a good repair. Jacobus Hornsteiner full size cello. With bow and case price is \$3200.
Contact: Juan Bowen at 289-1777.

Do you have an instrument for sale? Would you like to list it in the SEMSA newsletter? Email a description and contact information to: hickeyfamily@magnaspeed.net

Brian Wicklund - Here is the latest update on Brian Wicklund and information on a few local workshops he will be teaching at this spring. Hope that some of you can attend either workshop!

Sixth-Annual Two Day Fiddle Workshop

APRIL 8-9 Marine on St.Croix, MN

To be held at the Town Hall. The two-day work shop will include instruction, a dance and a concert.

\$45 advance, \$55 late registration

Contact Mary Allen 651-439-3154

Third-Annual Bluegrass in the Pines

APRIL 15-17 Lewis, WI.

Bluegrass workshop for fiddle, mandolin, guitar, banjo, and bass. Great music instruction at a really cool lodge.

Contact: csilver@presenter.com

What are your plans for the summer?

Check out the following summer opportunities.

Music with Connie Jelatis Hoke - 2005 Summer Camp Schedule

Connie has been teaching a music enrichment class at our monthly group lessons for the young SEMSA musicians not attending an orchestra reading class. At her private music school, she offers a variety of classes during the school year for different age groups. Listed below is her summer class schedule. The Summer Music Camp gives children a total arts approach to music as they explore instruments, voice, art, literature, dance and theatre. Classes will enchant students while providing a strong musical foundation. Teaching styles from Orff, Kodaly and Richards blend to build on each child's natural love of music.

June 13-17, 9 am - 12 p.m., **Musical Wonder** for ages 4-6
Based on St. Saens' "Carnival of Animals"

June 20-24, 9 a.m. - 12 p.m., **Musical Journeys** for ages 6-7
Music from other cultures

June 27-30, 5:30 - 6:00 p.m., **Musical Beginning** for ages from birth to 24 months
Bonding through beat, songs, and games.

June 27-30, 6:30-7:45 p.m., **Musical Whimsy** for ages 2 1/2 to 3 1/2.
A solid foundation for musical families

July 11-15, 9 a.m. to 3 p.m., **Musical Magic** for ages 7-12
Performance and improvisation in voice, instruments, and percussion

For more information, visit www.musicwithconnie.com or call 287-8111.

Randy Sabien – Jazz Strings & Fiddlin' Camp 2005

Did you enjoy the fall violin jazz workshop? Would you like the opportunity to continue working with Randy Sabien? Here is the information for Randy Sabien's summer music camp.

Jazz Strings & Fiddlin' Camp 2005 - June 12 – 17, 2005

Indianhead Arts & Education Center, Shell Lake, WI - Learn jazz, blues and fiddle music. Explore new melodies and rhythms. Tuition \$255, Room and board \$185

Contact: Indianhead Arts & Education Center, P.O. Box 315, Shell Lake, WI 54871 Phone 715-468-2414
www.IndianheadArtsCenter.com

New Directions Cello Festival & Young People's Cello-Bration – June 24 – 26, 2005

Cellist, mark your calendars today for the eleventh annual New Directions Cello Festival. It will be held at Lawrence University in Appleton, WI. The NDCF is a performance and educational forum for the current state of the cello's involvement in contemporary musical styles. There are concerts, workshops, jam sessions, an exhibition of electric instruments, Young People's Cello-Bration, a Cello Big Band, and more! Teen-age cellists are encouraged to attend for the full weekend. The entire Festival Package, if postmarked by April 29 is \$225 and includes all concerts, workshops, jam sessions, etc. The Young People's Cello-Bration for cellists ages 8 -16 is \$60 and includes workshops on Saturday from 9AM to 5PM and a pizza lunch. Features artists at this years festival are Natalie Haas, Dimos Goudaroulis, Rushad Eggleston, Martha Colby and Sakia Rao-de Haas. Fiddle virtuoso Mark O'Connor and violist Carol Cook will be joining Natalie Haas to give some workshops. To keep up to date with the schedule for this workshop, read profiles on the clinicians, to view and print the registration form check the web site at www.newdirectionscello.com for more information. If you decide to attend – you will not be disappointed. This is a very well organized and planned workshop weekend.

International Fiddle School - Blair School of Music, Vanderbilt University, Nashville, Tennessee

July 16 – 22, 2005 This camp is organized under the direction of Crystal Plohman. Small group classes in bluegrass, Irish, western swing, Scottish, old-time, blues, jazz, and rock for beginner, intermediate and advanced violin players. Tuition \$400 Contact: Crystal Plohman at (615)343-6360 or fiddleschool@yahoo.com
Information at: www.crystalplohman.com

Clara's Visitor

On Saturday, March 12th, the Rochester Music Guild, in conjunction with the Rochester Area Keyboard Club and Charter House, will present *Clara's Visitor*, a one-woman play with live piano performance. Guest pianist, Stephanie Wendt, is also the author of this poignant portrait of Clara Schumann. Ms. Wendt felt compelled to create this play after she discovered a collection of Clara Schumann's compositions. Wendt found the music to be astonishingly beautiful, but also filled with great sorrow.

The production is structured as a mystery. It is the spring of 1854, and Clara's husband, the famed composer, Robert Schumann, has been committed to a mental asylum. Clara is left alone to care for her eight children. Into this mixture of pain, anxiety, and overwhelming responsibility, enters the "visitor," a man fourteen years her junior, handsome, full of promise, and a musician like herself. *Clara's Visitor* weaves together Clara Schumann's words and compositions and presents a riveting story of love and loss, courage and frailty. Critics call Stephanie Wendt's synthesis of piano and theatrical performance utterly sublime while brilliantly reflecting the emotional complexities inherent in the Schumann's marriage and music.



Born in New Zealand, Stephanie Wendt began her piano studies in Australia at the age of five. She is the winner of numerous competitions and has performed as soloist and chamber musician on five continents. Her concert venues have ranged from Avery Fischer Hall in New York to a maximum-security prison. She holds degrees in piano performance from the Curtis Institute of Music and Indiana University, and a doctorate from the University of Minnesota.

The performance of *Clara's Visitor* will take place at 7:30 pm at the First Presbyterian Church, 512 3rd St. SW.

This program is made possible through the generosity of: The Jim and Judy Sloan Foundation through the Rochester Music Guild, the Marjorie Lidstrom Scholarship Fund through the Rochester Area Keyboard Club, and the Charter House. Proceeds will benefit Rochester Music Guild and Rochester Area Keyboard Scholarship Funds.

Seating will be limited. Tickets will be available at the Rochester Orchestra and Chorale office (286-8742), through Rochester Area Keyboard Club Members, or call Marilyn at 281-8341. Adults \$10 (\$12 at the Door), Students \$5 (\$6 at the Door).

Summer Suzuki Institutes

Have you made plans to attend a Suzuki Institute this summer? Summer may seem months away, but now is the time to make your selection and send in your registration. In order to guarantee your choice of program selection and housing accommodations, the sooner you registered the better! Whether you select you camp based on location, available weeks or clinicians – you will not be disappointed!

Check the Suzuki Association of America's web site at www.suzukiassociation.org for institute information. Look for the box labeled Summer Institutes 2005.

The following are some regional Suzuki Institutes you may want to consider:

Chicago Suzuki Institute – Trinity Conference Center, Deerfield, IL Phone: (847)446-3822 www.musicinst.org
Student Institute: July 3 – 8, 2005 Advanced/Chamber Music Program: July 2 – 8, 2005

Bismarck State College Suzuki Music Institute – P.O. Box 5587, Bismarck, ND 58506-5587
Institute dates: June 6 – 9, 2005 Phone: (701)224-5777 1-800-852-5685

Ann Arbor Suzuki Guitar and Flute Institute - June 21 – 25 Ann Arbor, Michigan www.arborguitar.org
Contact: Mary Lou Roberts, (734) 769-5704 email: Institute@arborguitar.org

ChiZiibii Suzuki Institute – Oak Hills Christian College, Bemidji, MN Information: (218)444-5606
July 10 – 15, 2005 Sponsored by the Headwaters School of Music and the Arts

American Suzuki Institute – University of Wisconsin – Stevens Point www.uwsp.edu/cofac/suzuki
Student programs: July 31 – Aug. 5, 2005 and Aug. 7 – 12, 2005 Chamber Music Program: July 31 – Aug. 12, 2005

Suzuki Institute Scholarships - Our SEMSA organization provides one-time scholarships to any family attending a Summer Suzuki Institute for the first time. This is done to encourage families to attend one of these wonderful weeks of Suzuki music making. Talk to your SEMSA lesson teacher for more details.